



RouteSmart
A FEDEX COMPANY

ROUTESMART FOR **PUBLIC WORKS**

CONSOLIDATE ROUTES

ENHANCE SAFETY

REDUCE MILEAGE AND COSTS

STREAMLINE ROUTE PLANNING

REAL RESULTS TO IMPROVE OPERATIONS

REDUCING TIME, DISTANCE AND COSTS UP TO 30%

FOR MUNICIPALITIES SERVICING 50 MILLION HOMES AND BUSINESSES.

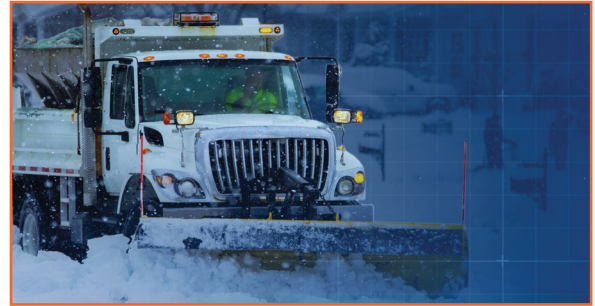
OPTIMIZED ROUTING FOR MAXIMIZED SAVINGS

Hundreds of cities and private organizations across the globe rely on our proven solutions to easily manage service areas.



RESIDENTIAL WASTE & RECYCLING COLLECTION

- Sequence service on right-side for automated side loaders
- Optimize to improve safety compliance
- Digitize and visualize your routes faster
- Maximize investment in automated collection equipment



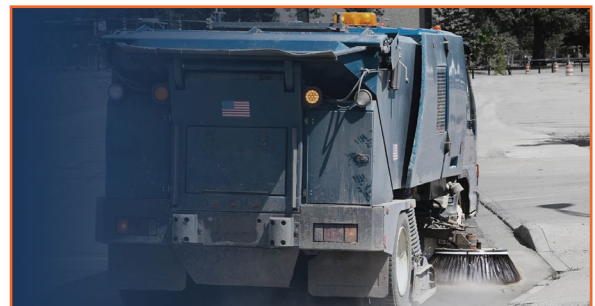
WINTER OPERATIONS

- Manage districts and territories individually to account for unique challenges
- Design routes that consider street priorities and number of passes
- Assign service priorities to snow emergency routes and other main roads
- Factor service speed, salt/sand capacity and other key parameters



WORK ORDER & INSPECTION ROUTING

- Handle bulky routing solutions faster
- Optimize cart delivery and container maintenance services
- Create inspection routes by priorities and job qualifications



STREET SWEEPING

- Develop faster, more accurate routes
- Create new routes that adhere to existing street signage
- Utilize street priorities and number of passes
- Factor for debris intake, sweeper speeds, and other key parameters

PROVEN ROUTE PLANNING SOLUTIONS

Our systems integrate with your existing technology to form a complete route optimization solution to meet your demanding operational needs.



Solve your everyday route planning and dispatching needs with our comprehensive suite of tools that model the unique constraints of routing high-density residential collection and the complex service patterns of commercial service.



Support GIS-based analysis of snowplow and street sweeping route operations with the world's leading desktop GIS system from Esri. RouteSmart Plan is integrated with RouteSmart Optimize and RouteSmart Engine to allow you to import, analyze, and edit your data.



Integrate RouteSmart Engine directly into your client-side systems to support dynamic daily route balancing and sequencing for work orders, inspections, bulky waste collection, and other services. RouteSmart Engine web services provide access to our powerful route optimization algorithms through a standard API, accelerating your implementation and improving your bottom line.



Navigate high-density waste collection, snowplow, and street sweeping routes and verify service with SmartSuite Mobile for phones and tablets. SmartSuite Web allows you to view and track realtime activity on live maps in any browser.

ROUTESMART.COM/PW | 800.977.7284

Designed to
help operations
professionals do
a better job



AUTOMATED BALANCING
AND SEQUENCING



ROUTE AND SEQUENCE
EDITING TOOLS



SAFETY CONSIDERATIONS



DATA INTEGRATION



REPORTING AND
ANALYTICS

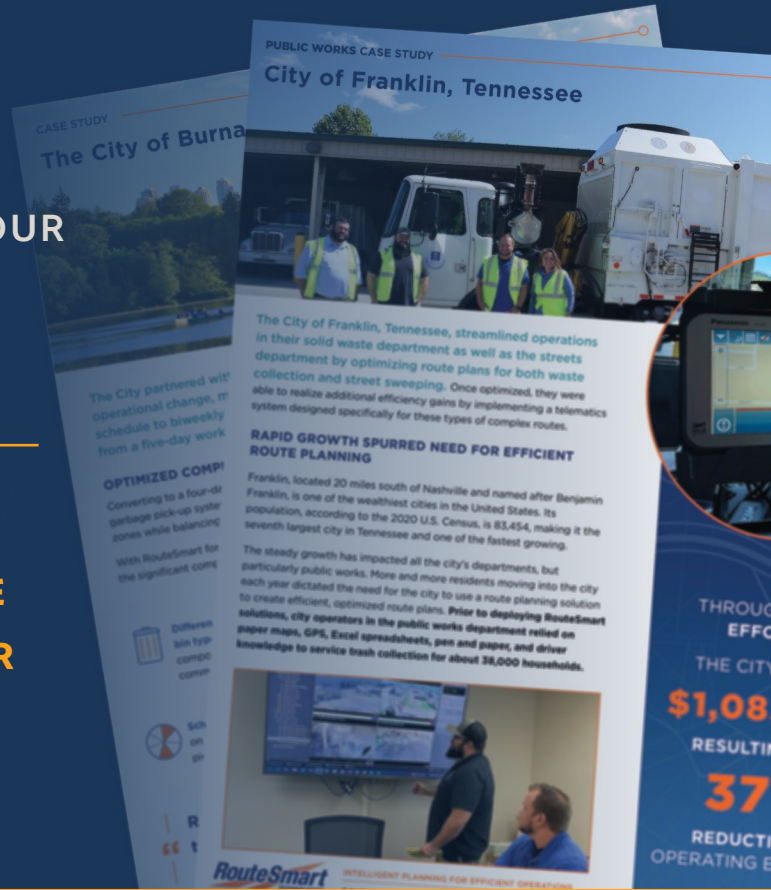


CLIENT SUCCESS STORIES

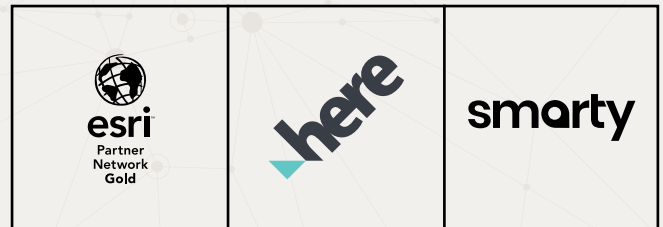
OUR SOLUTIONS ARE PROVEN
OVER DECADES OF SUCCESS AND OUR
CLIENTS WILL ATTEST TO THE
REAL RESULTS AND SAVINGS.



SCAN THE QR CODE
TO HEAR FROM OUR
CLIENTS.



Plan your operations with
confidence knowing RouteSmart
is partnered with the leading
geospatial technology companies



Contact Jon Knazur, Senior Business Development Manager
at 800.977.7284 ext. 3217 or jknazur@routesmart.com.



INTELLIGENT PLANNING
FOR EFFICIENT OPERATIONS

Route planning is fundamental to your organization. Before a single truck leaves your facilities, you need to build the foundation for a successful, efficient day. Our clients benefit from a precision-oriented, detailed approach to solving daily route planning problems, achieving greater efficiency, and improving safety.

[ROUTESMART.COM/PW](https://routesmart.com/pw) | 800.977.7284