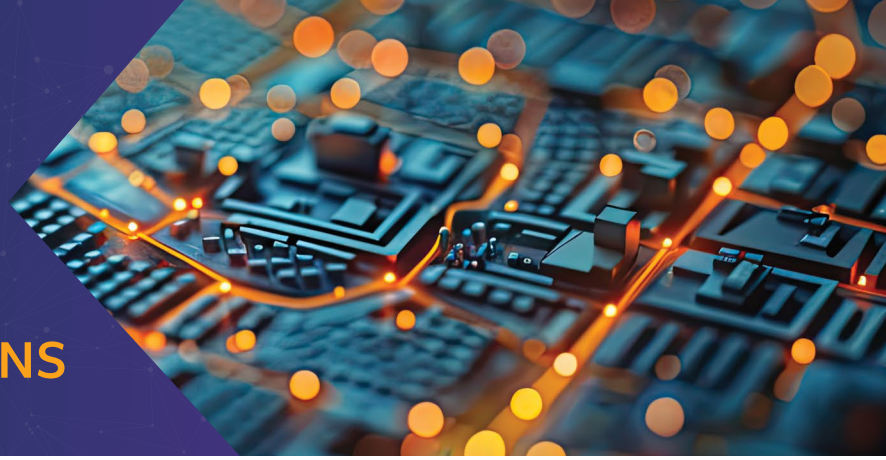


# ROUTESMART FOR STREET SERVICE AND STREET SURVEY OPERATIONS



## Conquer the complex challenges of your operations with powerful route planning tools for street operations

Optimize and execute efficient vehicle route plans over large, complex city street networks. Create safer, balanced, streamlined routes for street service and survey functions.

SNOWPLOW AND WINTER MAINTENANCE



STREET SWEEPING



STREET SURVEYS



UTILITY ASSET INSPECTION



SPRAYING AND INSECT CONTROL



LIDAR DATA COLLECTION



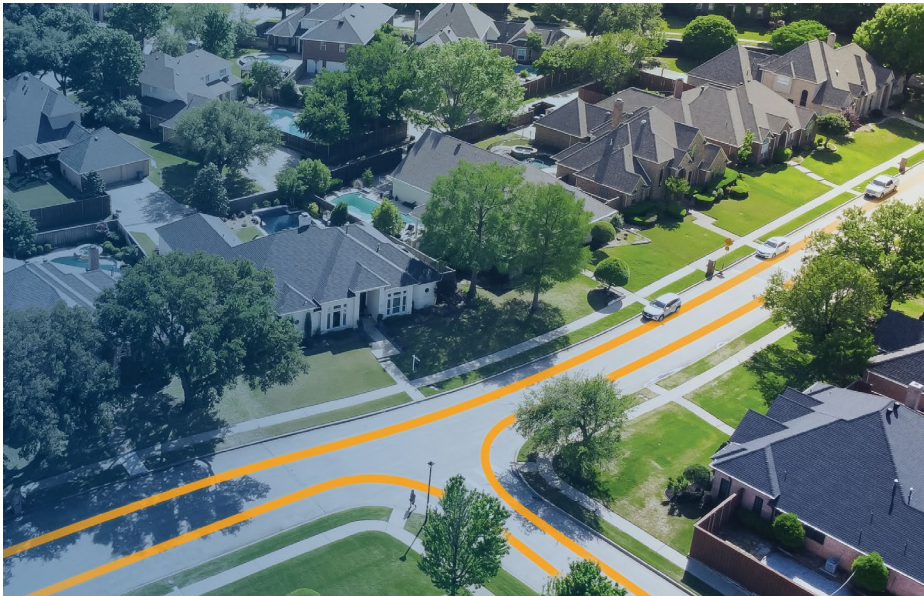
## ROUTESMART PLAN



Support GIS-based analysis of route operations by leveraging the world's leading desktop GIS system from Esri. RouteSmart Plan allows you to optimize, import, analyze, and edit your data.

## ROUTESMART PLAN ADVANTAGES

- Balance workloads for your fleet using advanced algorithms
- Optimize route sequences to minimize mileage and time
- Create route plans with detailed turn-by-turn information to maximize safety and efficiency
- Provide summary reporting for managers and supervisors
- Train drivers faster with better visualization and detailed maps
- Quickly export to navigation systems for route guidance and tracking



## SMARTSUITE MOBILE & WEB

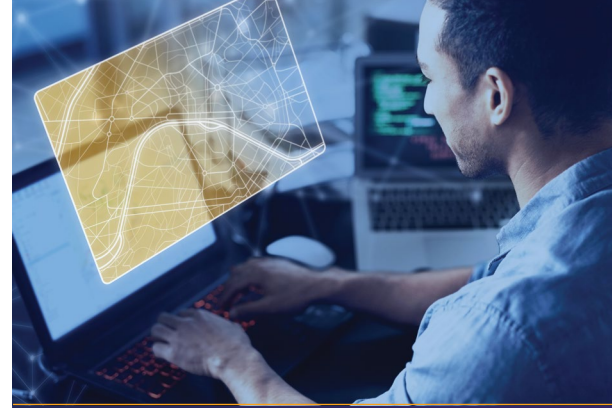
**SmartSuite**



**SmartSuite Mobile offers in-vehicle solutions for Android phones and tablets. Designed to meet the rigorous demands of street operations navigation, SmartSuite Mobile leverages high-quality, accurate street data. This ensures that drivers can precisely follow the routes planned in RouteSmart Plan.**

Services are managed in the cloud from a single, map-based platform that enables teams to monitor services in real time. This technology facilitates immediate and effective operational decisions and allows for the review of service history.

When implemented alongside RouteSmart Plan, SmartSuite Mobile and Web provide the only seamlessly integrated solution that spans from end-to-end route planning to in-vehicle route guidance.



## FUNCTIONAL CAPABILITIES

- Design snowplow routes that consider snow emergency routes, street priorities and number of passes
- Factor street sweeper service speed, salt/sand capacity, and other key parameters
- Model street survey routes based on data collection, monitoring or construction
- Build multiple utility route models for different scenarios such as surveying, maintenance or replacement
- Manage spraying and insect control locations individually to account for changing populations
- Assign LiDAR routes based on mobile or static to collect LiDAR point clouds



**Contact Jessica Cearfoss, Senior Business Development Manager** at 800.977.7284 ext. 3100 or [jcearfoss@routesmart.com](mailto:jcearfoss@routesmart.com) to discuss your organization's specific needs.



**ROUTESMART.COM/PW • 800.977.7284**

8850 Stanford Boulevard  
Suite 3250, Columbia, MD 21045

