

ROUTESMART ROLL-OFF ROUTE OPTIMIZATION

Improve the way you optimize and
schedule your dynamic service

Our premier solution allows you to build balanced routes and create the best daily schedule for maximized productivity of your ever-changing roll-off service within minutes.

With exclusive historical traffic data from HERE, you can generate more accurate daily route plans that average two more pulls per truck per day to significantly reduce time, mileage, and route costs.



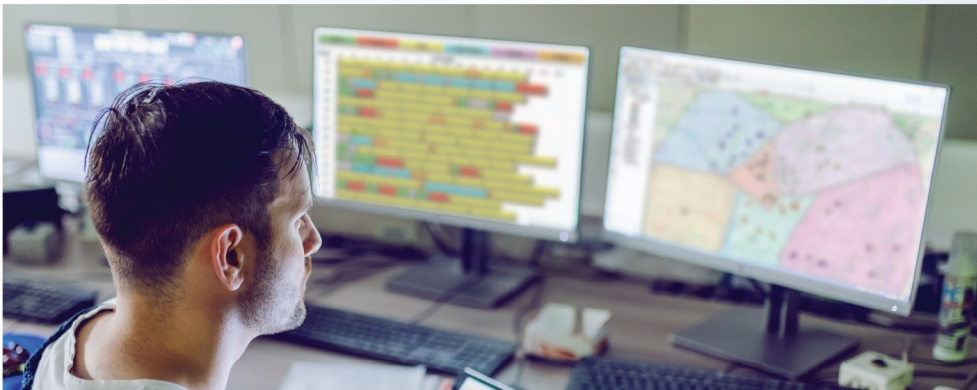
We used to plan for
8 STOPS PER DAY,
but now we sometimes easily
GET 10 OR 11 STOPS.”

– CEO, Established U.S. roll-off company

ENHANCE OPERATIONS

Designing a daily roll-off solution can be a difficult task, at times taking even industry veterans hours to complete. With our advanced technologies, you can shorten the learning curve for new dispatchers to create efficient routes within minutes.

By integrating standard APIs into your existing systems, dispatchers can more easily create daily solutions for even the most dynamically changing businesses. Plus, with specialized reports exclusive to our system, you can view improved route efficiency to continuously optimize your service.



ROUTESMART.COM/PUBLICWORKS | 800.977.7284   



FUNCTIONAL CAPABILITIES

Become more competitive in the field by utilizing our industry-proven solvers to analyze and schedule stops that optimize each type of service.

- ✓ DELIVER
- ✓ PICK UP
- ✓ RELOCATE
- ✓ SWAP
- ✓ EMPTY AND RETURN

Create equal workloads for your entire fleet, considering time windows that will improve customer satisfaction, to help achieve your goals.

- Reduce empty rail time
- Minimize trips to facilities
- Choose the optimal open facility for each container and material type
- Consider waste stream accepted at facility



Contact Jessica Cearfoss,
Business Development Manager
at 800.977.7284 ext. 3100 or
jcearfoss@routesmart.com to discuss
your organization's specific needs.