



ROUTESMART FOR **PUBLIC WORKS**

**Balance Workloads and Consolidate Routes
with Integrated Vehicle Routing Solutions
Designed for Public Works Operations**

- ▶ Residential & Commercial Collection
- ▶ Street Sweeping
- ▶ Winter Maintenance
- ▶ Inspection & Work Orders
- ▶ Bulky Trash Service



The world's most intelligent routing system

routesmart.com



Advanced Vehicle Routing Maximizes Savings

Your Routes — Optimized

Every mile counts. Whether you're collecting residential and commercial waste, sweeping streets, fighting winter storms, or routing inspections and work orders, each additional mile impacts your budget and your balance sheet.

Because fuel and labor costs continue to climb and newly mandated environmental requirements demand even higher efficiency standards, increasing your operational efficiencies and reducing costs are more important than ever.

Your fleet must operate optimally every single day.

Effective Vehicle Routing Is Your Key to Success

For more than 25 years, RouteSmart Technologies has worked with municipal and private hauling companies — both small and large — as well as many other public works organizations seeking to improve service and reduce operating costs. Our flagship tool — RouteSmart for ArcGIS® — is used around the globe and is relied upon for its comprehensive suite of vehicle routing tools to balance workloads and maximize service order sequencing for high density residential and lower density commercial service route operations.

Hundreds of municipalities and private organizations worldwide work with RouteSmart software to consolidate routes, reduce mileage, eliminate overtime, improve safety, and reduce costs to improve bottom-line results.



RouteSmart — Built for Public Works Routing



RESIDENTIAL & COMMERCIAL COLLECTION

Effectively balance high density residential and multi-day commercial service route plans with RouteSmart for ArcGIS®. Unlike other vehicle route planning software, RouteSmart is an integrated solution that handles both types of territory and route planning problems.

For residential routing, RouteSmart provides tools that enable you to balance workloads throughout the week, build daily routes, and optimize collection order sequences.

Commercial multi-day routing tools allow you to deliver the highest levels of service to your most demanding customers. Efficiently route all of your time-critical service stops across varying service days, collection frequencies and patterns of service.



STREET SWEEPING

Tougher environmental laws mean there's pressure to meet new standards and get more done with less. With RouteSmart, you can optimize routes by restricting route changes based on existing street signage while modeling odd-even street-side service to meet your parking requirements, prioritizing your streets, and developing the most realistic route times based on the vehicle's travel speeds.



WINTER MAINTENANCE

Snow emergencies require plans that quickly prioritize clearing, and RouteSmart helps you plan your attack. Clear your most important streets in order — from major thoroughfares and snow emergency routes down to the less-traveled local roads — and build route plans that plow every lane. Allocate your crews in the most effective manner possible, and take into account every one-way street, side-of-street service restriction, multi-lane road, and more.



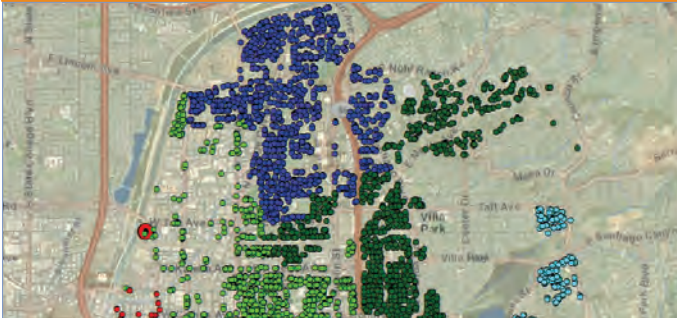
INSPECTIONS, WORK ORDERS, AND BULKY TRASH SERVICE

Inspections, field service work, and other waste collection services such as bulky trash collection require route planning on a daily basis — and your citizens expect a high level of service. Trying to manage large workload volumes, prioritizing assignments, and dispatching qualified personnel to service work orders and other period services may be among the toughest routing and scheduling tasks you face.

RouteSmart provides automated route planning tools to create balanced workloads, optimize service sequences, and route plan reports to help crews get into the field faster and be more productive.

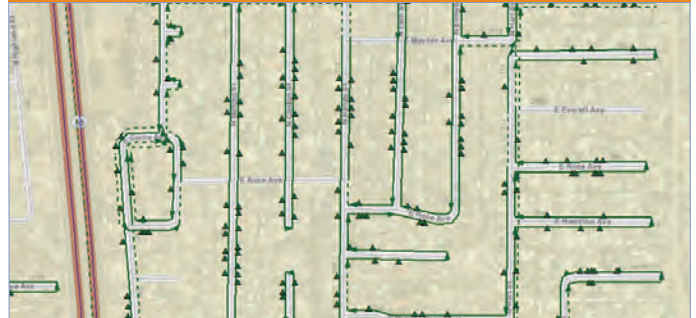
RouteSmart Product Features

Balancing



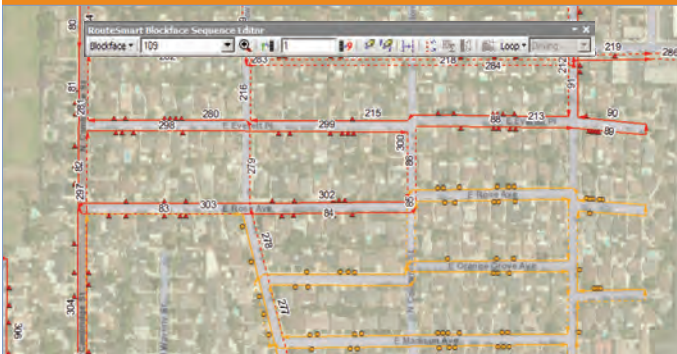
Leverage RouteSmart's advanced solvers to create balanced workloads for every day of the week. Balance routes based on time, fixed number of routes, and other parameters.

Sequencing



Side-of-street, address-specific calculations from the solvers provide precise results. RouteSmart solvers are specifically designed to handle large-scale, high-density routing problems quickly.

Route and Sequence Editing



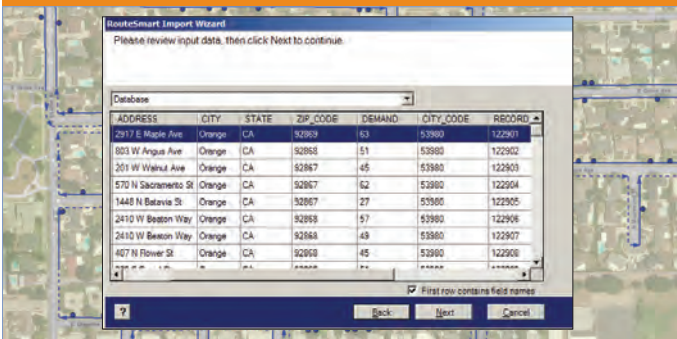
Route editing tools are designed to make adjustments that represent valuable local area knowledge. Rapid-editing tools allow routes to be fine-tuned at multiple levels — whole-block or single-customer.

Safety Improvements



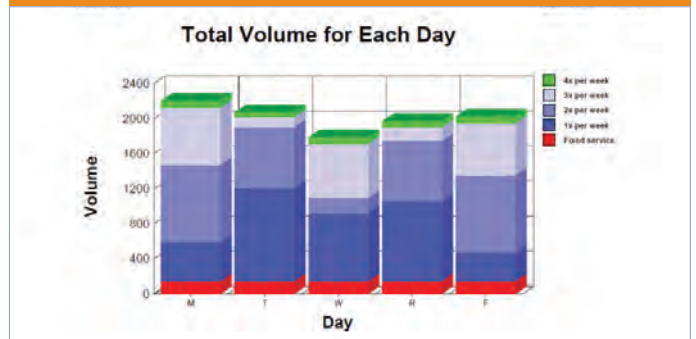
Leverage RouteSmart solvers to maximize same-side service, so drivers do not walk across oncoming traffic. Design routes so backing down streets is minimized or eliminated.

Importing and Exporting Data



Integration with your existing work-order management system is easier with RouteSmart Import and Export Wizards that guide you through the process. Quickly display your customers on the map with flexible RouteSmart tools.

Reports



Route Summary Reports and Solution Comparison Reports show you how much you have improved. With more than 25 standard reports in RouteSmart, you can view reports geared specifically for each of your public works needs.

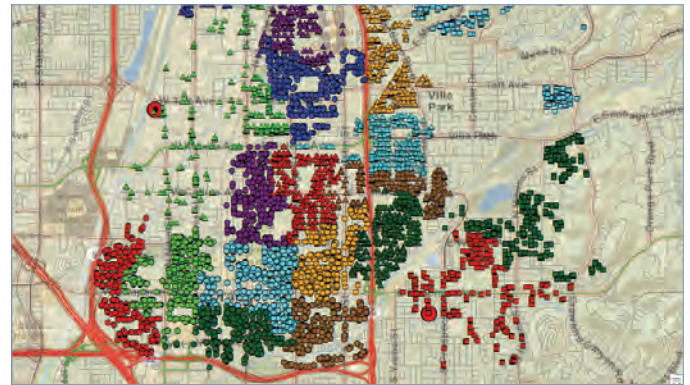
How RouteSmart Works

RouteSmart for ArcGIS® is a visual route planning tool developed exclusively on the Esri ArcGIS® platform with Premium Street Centerline data from HERE (NAVTEQ and Nokia Maps).

RouteSmart has robust capabilities to solve your most complex routing challenges and enables you to easily manage your operating territories.

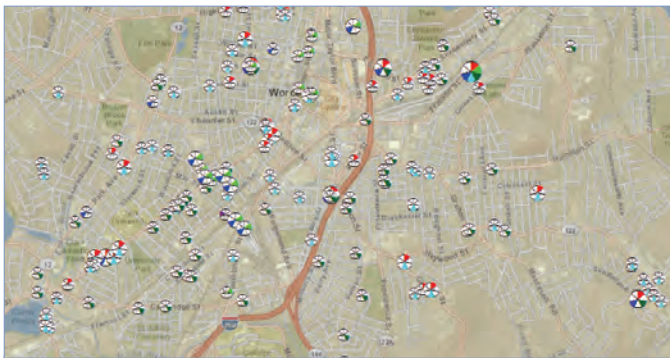
The system helps you model the unique constraints of routing both high-density residential neighborhoods as well as multi-day commercial route territories.

Improve your operations by balancing with address-specific, side-of-street-level routing precision to reduce the number of personnel, vehicles, vehicle miles, nonproductive time, and overtime.



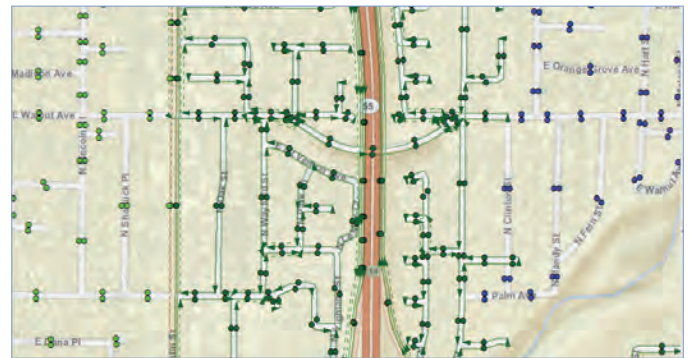
Residential Routing

RouteSmart solvers can be used to solve large-scale residential waste collection problems. Balance geographic territories by day of the week, then create optimized daily routes and sequences.



Commercial Collection

RouteSmart enables you to create balanced territories for each vehicle, and solve the complex problem of required service patterns for your high-margin commercial customers. Use the sequence solvers to meet time-definite service requirements and exceed your customers' expectations.



Winter Maintenance

Create multiple scenarios for varying severity of snow events, and prioritize the most important streets. Define sand or salt rates. Export turn-by-turn instructions to printed reports and maps, and send service data to navigation systems.



Street Sweeping

Model new routes and sequences based on existing days, times, and posted signage, and create new routes that account for odd/even side-of-street parking requirements.

Blockface Summary Report

Address Range: <Quadrant summary>
Schedule Label:

Route	No.	Side	Block
101	1	R	W CHAPMAN AV
101	2	R	W HALEY ST
101	3	S	W MAPLE AVE
101	4	B	W MAPLE AVE
101	5	E	W BATAVIA ST
101	6	E	W BATAVIA ST
101	7	E	W BATAVIA ST
101	8	B	W BATAVIA ST
101	9	W	W LAURET AVE
101	10	E	W COLUWER AVE
101	11	E	W COLUWER AVE
101	12	E	W FLOWER ST
101	13	E	W FLOWER ST
101	14	E	W BITTBERGSONS
101	15	R	W CHAPMAN AV
101	16	B	W CHAPMAN AV
101	17	B	W CHAPMAN AV
101	18	E	W CHAPMAN AV
101	19	E	W CHAPMAN AV
101	20	B	W CHAPMAN AV
101	21	E	W CHAPMAN AV
101	22	E	W CHAPMAN AV
101	23	E	W CHAPMAN AV
101	24	E	W CHAPMAN AV
101	25	E	W CHAPMAN AV
101	26	E	W CHAPMAN AV

RouteSmart Detail Map

Route 109
Travel Pat

Street by Street Directions

Direction	Address	Order	Time
Start route	WEST		0:00:00
Right out of traffic	109 W 47 ST	0:0	0:00:00

Inspections, Work Orders and Bulk Collection

Leverage the power of RouteSmart Macro Language to perform automated nightly tasks. Generate routes based on nightly order files from your work-order management system. Create maps, reports, and turn-by-turn directions, and save hours of planning time.

At the Forefront of Route Optimization Technology

Leading organizations in the public works, postal and parcel delivery, utilities, and newspaper industries have come to rely on RouteSmart Technologies to solve their complex routing problems. With an unrivaled combination of insight, experience, and industry specialization, RouteSmart Technologies has established itself as a leader in vehicle route optimization software technology for the community of clients we serve.

RouteSmart route optimization technology is driven by people with a passion for vehicle routing technology that achieves measurable results, and is continually being enhanced by an expert team focused exclusively on the needs of our clients. Composed of the leading geospatial technologies from Esri and HERE (NAVTEQ and Nokia Maps), RouteSmart software integrates with client-side systems to form a complete routing solution for meeting the demanding operational needs of the industries we serve.

Our Experience Improves Your Results

In our fourth decade of providing sustainable route optimization solutions that sweat the details of solving the most complex routing challenges with the highest degree of precision and processing performance, RouteSmart Technologies and our network of exclusive distributors are passionate about driving costs and inefficiencies out of the routing operations of our customers. With deployments that span the globe, RouteSmart Technologies software forms the backbone of organizations that are responsible for servicing millions of addresses on a daily basis.

RouteSmart Technologies works with the largest municipal and private organizations responsible for public works operating effectiveness. RouteSmart for ArcGIS® from RouteSmart Technologies is relied upon for its comprehensive suite of capabilities for balancing routes and creating operational efficiencies for our clients' operating environments.

Hundreds of municipalities and private organizations worldwide work with RouteSmart Technologies and form a community of user experience that is unrivaled among the competition.

Nothing Speaks Louder than Success

See firsthand how we have helped municipalities and companies worldwide streamline their routing and realize a significant return on investment. Visit our Success Center on the web, stocked with case studies and videos: routesmart.com/success

This Way Forward

To optimize your routes with RouteSmart Technologies, call us at **800.977.7284** or visit routesmart.com today. See real routing results in your future.



The world's most intelligent routing system

routesmart.com